

Stage Equipment

Table of contents

F- HYDRAULIC TABLES OF STAGE	2
RAKED STAGE	3
E- HYDRAULIC TABLES OF THE ORCHESTRA PIT	3
F11- REVOLVING STAGE (REVOLVING STAGE CASSETTE) ...	3
P3- FALSE PROSCENIUM	3
H3- PORTAL FLYBAR	3
M- FLYLOFT - FRONT STAGE	4
FLYBARS - MOTOR	
R- FLYBARS - MANUAL	4
L- POINT HOIST	4
A- MOTOR FLYLOFT - REAR STAGE	4
H1- HYN AIS CURTAIN	5
H4- GAUZE (scrim without seam for front projection	5
Z1- IRON CURTAIN	5
FOILS FOR BACK PROJECTION	6
MASKING OF THE THEATRE	6
TRANSPORTATION DIMENSIONS	6
EFFECTS	6
EXAMPLE OF LOAD OF FLYBARS	7

F- HYDRAULIC TABLES OF STAGE

PHOTO

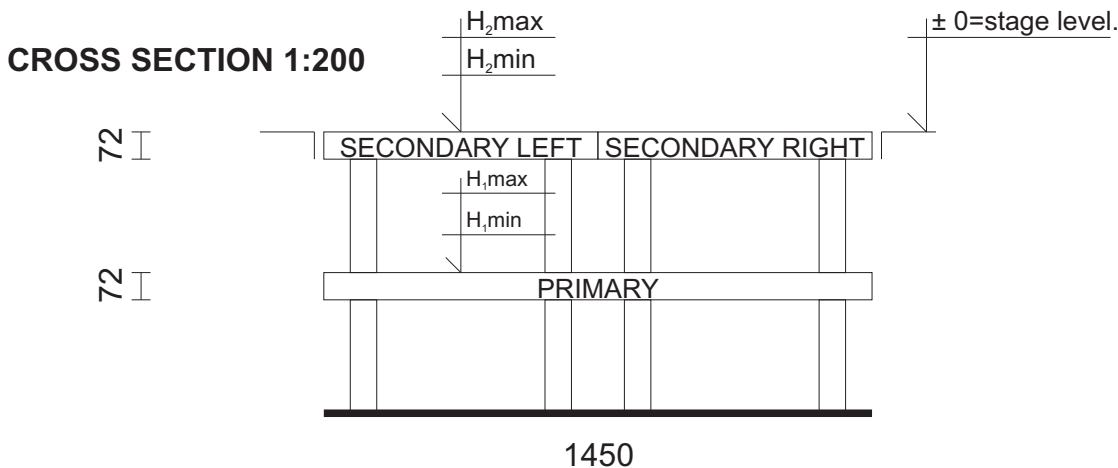
Each of the eight hydraulic tables has two independent levels (see the cross section):

1. Primary (lower)
2. Secondary (upper) (16 pieces)

The secondary table is divided into two halves.

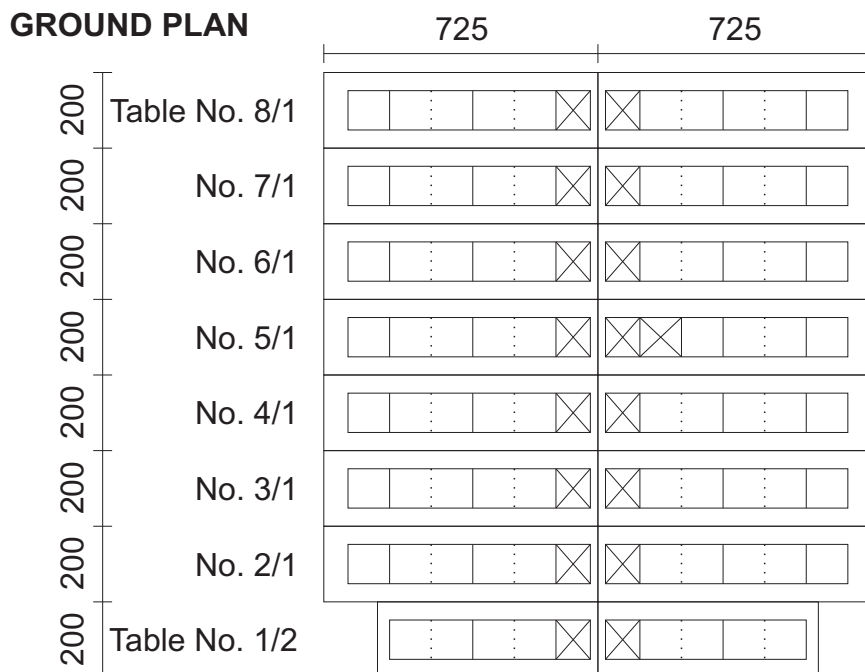
On each half there are six traps (tables No. 2-8) or five traps (table No. 1) (see the ground plan).

Table lift	Secondary (See also *)	No.1-6; No.8	$H_{2max} + 350 \text{ cm}$ $H_{2min} - 293 \text{ cm}$
		No.7	$H_{2max} + 300 \text{ cm}$ $H_{2min} - 228 \text{ cm}$
	Primary (See also **)	No.1-6; No.8	$H_{1max} \pm 0$ $H_{1min} - 365 \text{ cm}$
		No.7	$H_{1max} \pm 0$ $H_{1min} - 300 \text{ cm}$
Speed of tables			$v \text{ max } 0,15 \text{ m/s}$
Static load of tables			500 kg/m^2
Dynamic load of tables			100 kg/m^2



Movement of tables with persons is not allowed.

*
Mechanically locked positions of the secondary:
 $H_{21} = + 300 \text{ cm}$
 $H_{22} = + 72 \text{ cm}$



**
Mechanically locked positions of the primary:
tables No. 1-6; No. 8
 $H_{11} = - 72 \text{ cm}$
 $H_{12} = - 300 \text{ cm}$
 $H_{13} = - 335 \text{ cm}$
table No. 7
 $H_{11} = - 72 \text{ cm}$
 $H_{12} = - 107 \text{ cm}$
 $H_{13} = - 300 \text{ cm}$

Horizontal static load of tables extended to the maximum must not exceed the value of 1 kN (Approx. 100 kg/m^2)

⋯ The dotted braces are possible to take away

⊗ Traps, where the trap mechanism is not possible to be installed

RAKED STAGE

Tables can lean, or make a raked stage set up with the inclination of 5%, 10%, 15%, 20%

PHOTO

E- HYDRAULIC TABLES OF THE ORCHESTRA PIT

The orchestra pit is divided into 6 hydraulic tables.

During movement the orchestra pit tables are noisier.

Table travel	H_3 max	± 0
	H_3 orchestra	- 261 cm
	H_3 min	- 635 cm
Static load of tables		500 kg/m ²
Dynamic load of tables		100 kg/m ²

F11- REVOLVING STAGE (REVOLVING STAGE CASSETTE)

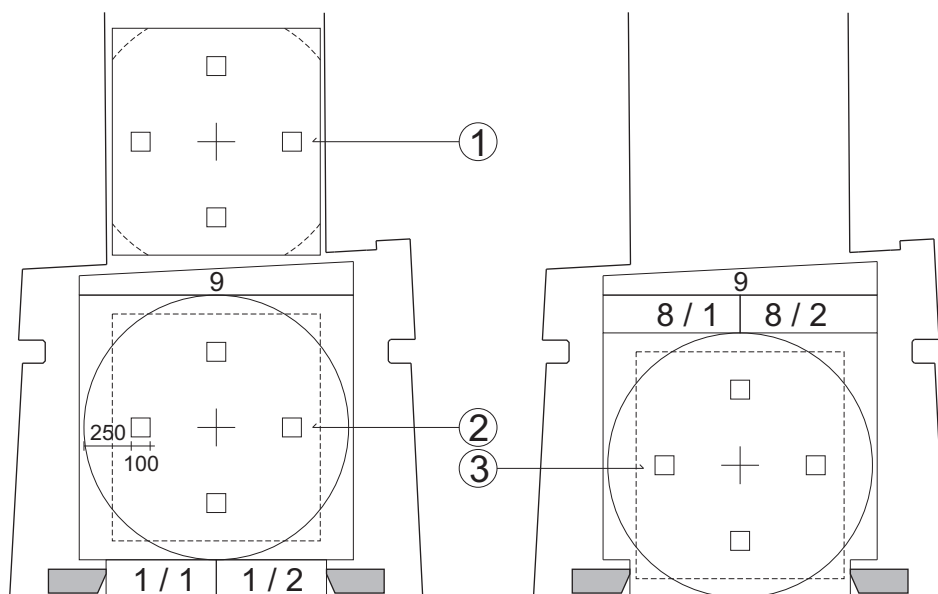
The revolving stage is installed through fitting the cassette (11x12m) from the rear stage (position 1) into position 2 or 3 (see the scheme) and building margins.

Speed of cassette incursion		0,1 m/s
Diameter of the revolving stage		14 m
Perimeter speed of the revolving stage	v min	0,1 m/s
	v max	1 m/s

In the revolving stage two traps can be used in the given revolving stage positions.

If the revolving stage is installed:

- in position 2, vertical movement of table No. 1 can be used
- in position 3, vertical movement of tables No 8 can be used



Installation of the revolving stage takes about 30 minutes

Maximal load of revolving stage while turning: 60 kg/m²

Revolving stage enables setting of direction, speed and stopping position to the memory

POSITIONS OF THE CASSETTE + REVOLVING STAGE M = 1:400

- 1 - parking position of the cassette
- 2 - middle position of the revol. stage
- 3 - front position of the revol. stage

Table No. 9 hides a safe for storage of the drops and transports objects longer than 8m to the stage

P3- FALSE PROSCENIUM

Span of lighting towers	11,66 m
Height of the lighting bridge	8,03 m

H3- PORTAL FLYBAR

Load	300 kg
Speed	v= 0 - 1 m/s

M- FLYLOFT - FRONT STAGE FLYBARS - MOTOR

Quantity of flybars			30 pieces
Load			650 kg
Diameter			50 mm
Length of flybar	basic		14,5 m
	With extensions		15,5 m
Lift	front part	$h_{1,max}$	24,2 m
	Lowered part	$h_{2,max}$	16,2 m (17,6 m) *
Minimum flybar height		h_{min}	1,1 m
Speed of flybar		v_{min}	0,001 m/s
		v_{max}	1,5 m/s
Accuracy of bearing			$\pm 0,01$ m
Flybars are mutually synchronized			

R- FLYBARS - MANUAL

Quantity of flybars			20 pieces
Load			250 kg
Diameter			50 mm
Length of flybar	basic		14,5 m
	With extensions		15,5 m
Lift	front part	$h_{1,max}$	24,5 m
	Lowered part	$h_{2,max}$	16,8 m
Minimum flybar height		h_{min}	1,1 m

L- POINT HOIST

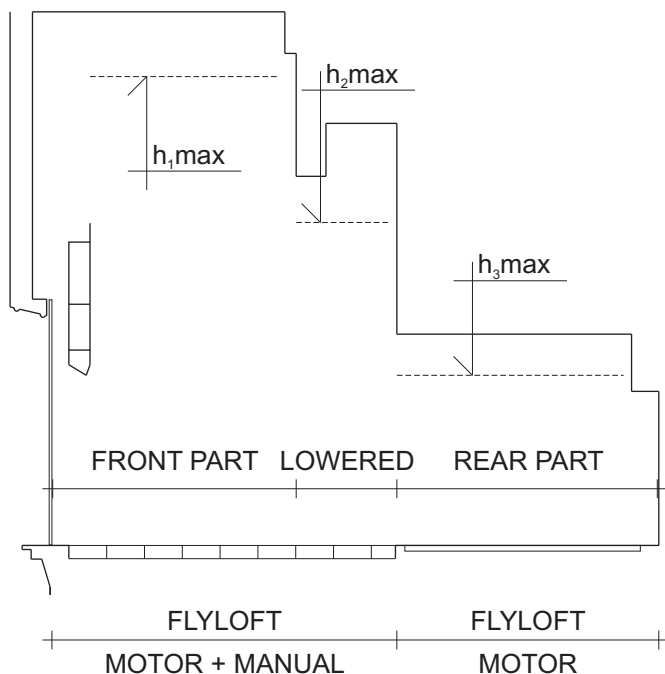
Quantity of point hoist		10 pieces
Load		600 kg
Speed of point hoist	v_{min}	0,001 m/s
	v_{max}	1,5 m/s
Lift		24,2 m

Point hoists are situated above the front part of the stage (see draw). Point hoists are synchronized with other motor flybars. Transplant of the point hoists takes about 40 minutes, it's necessary to consult.

A- MOTOR FLYLOFT-REAR STAGE

Quantity of flybars		13 pieces
Load		160 kg
Cross-section		100 x 60 mm
Length of flybar		8,2 m
Lift	$h_{3,max}$	9 m
	$h_{3,min}$	1,35 m
Speed	v_1	0,25 m/s
	v_2	0,5 m/s

During operation flybars are noisier.



Flybar M_1 is not suitable for suspension of independent decoration.

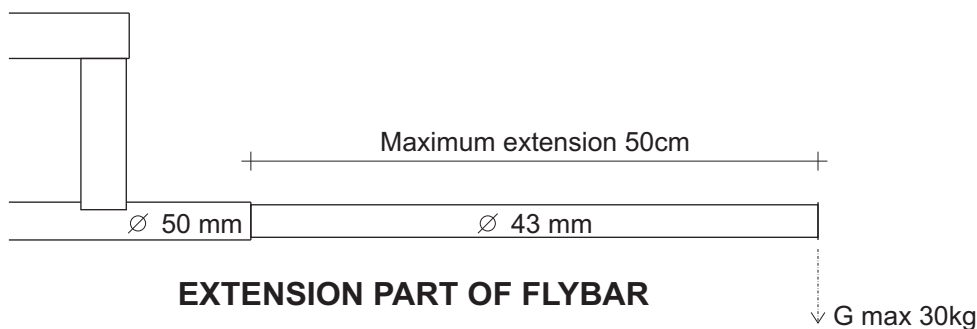
*

Flybar $M_{18} - M_{27}$ have $h_{2,max} = 16,5$ m

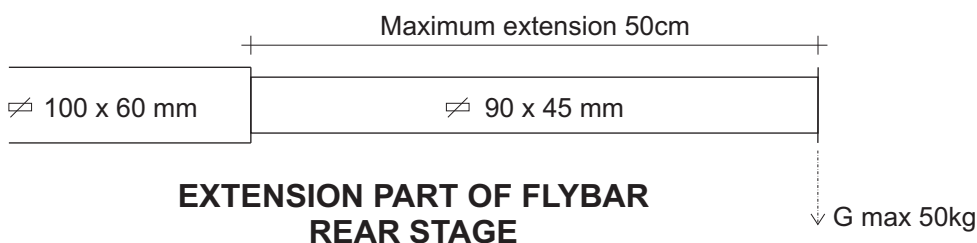
*

Flybar $M_{28} - M_{30}$ have $h_{2,max} = 17,6$ m

SCHEME OF THE LENGTHWISE SECTION M = 1:400



Load of the fully extended extension part:
G max = 30 kg



Load of the fully extended extension part:
G max = 50 kg

H1- HYN AIS CURTAIN

Speed v_1 0,15 m/s
(Only up) v_2 0,3 m/s

H4- GAUZE (scrim without seam for front projection)

Speed v 0 - 1 m/s

Z1- IRON CURTAIN

Speed v 0,36 m/s

The iron curtain exceeds the opening of the prompter's box by 0,1 m.

FOILS FOR BACK PROJECTION

Dimension 14 x 14 m

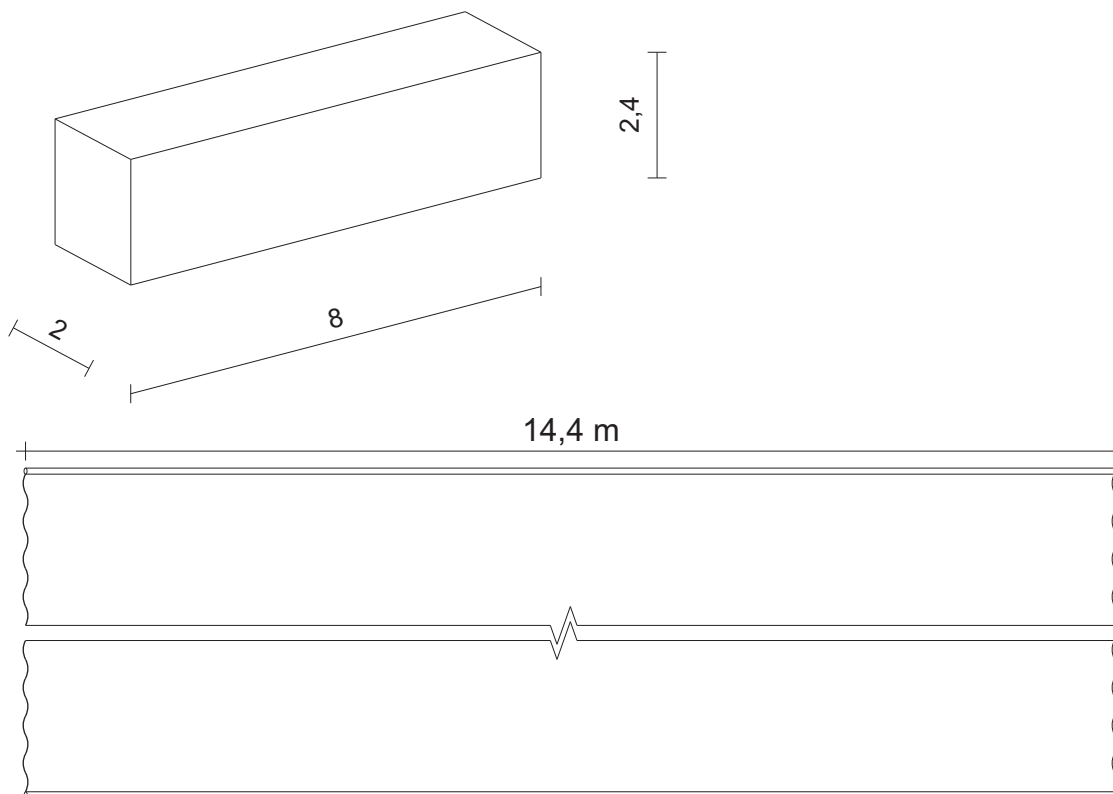
- Color
- 1) anthracite (show foil)
 - 2) light grey (studio foil)
 - 3) white (opera plastic)

MASKING OF THE THEATRE

- Velvet
- black
 - Dark blue
 - Wine Red

TRANSPORTATION DIMENSIONS

Decoration (maximum transportation dimensions)	width	2 m
	height	2,4 m
	length	8 m
Drop (maximum width)		14,4 m

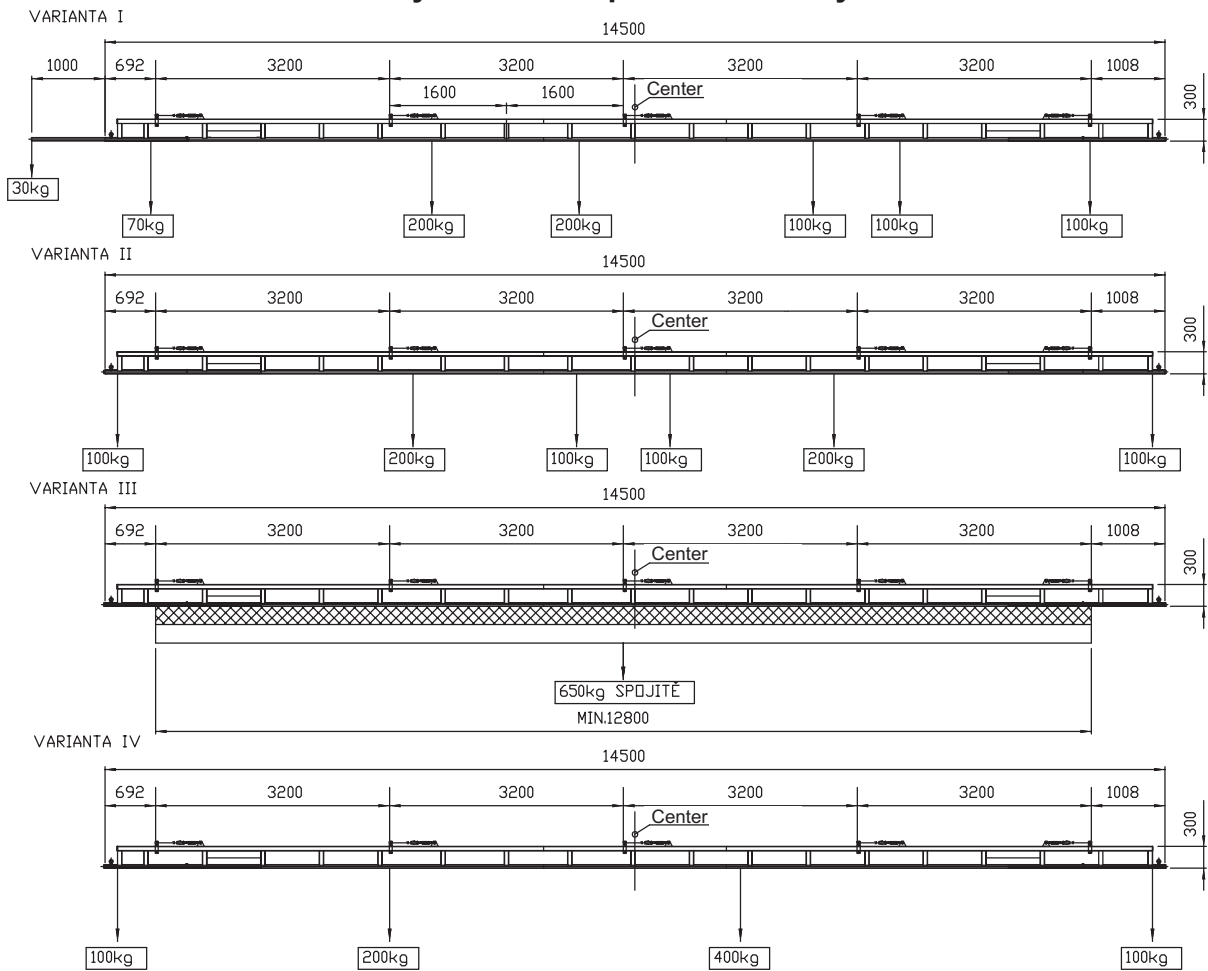


EFFECTS

Smoke machines (warm): MARTIN Jem ZR33
MARTIN Jem ZR44
SMOKE FACTORY Data II

Haze: MDG Atmosphere APS

Motor flybars - example of load of flybars



Manual flybars - example of load of flybars

